



MDRM

Mantech Dynamic Robotic Manager

Workflow Based IT Automation Solution



IPL



Monitoring



Simulation
Training



Daily Routine
Checks



Disaster
Recovery

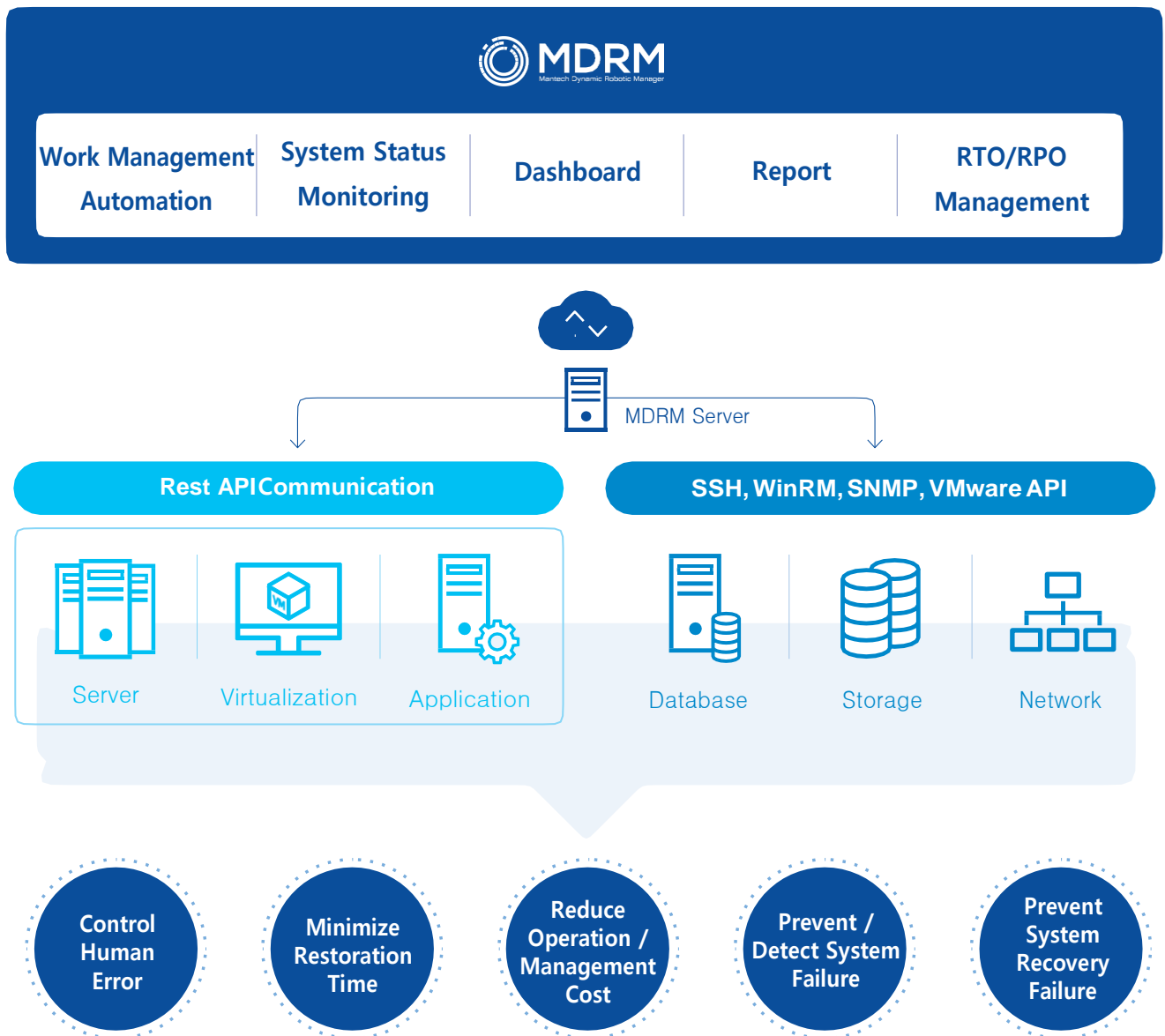
manTech
Solution

MDRM Mantech Dynamic Robotic Manager

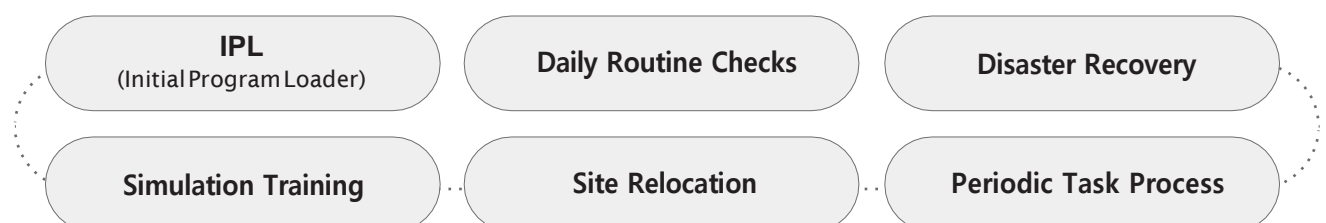
MDRM is the IT Automation Solution which can be applied in various system environments to help our client efficiently manage their daily operation and quickly recover from any system failure.

Datacenter can be efficiently managed and operated with the help of MDRM features like **Workflow based business process management, operational procedures verification, system monitoring, and visualized system recovery procedure.**

MDRM will help to clarify numerous complex tasks managing with the systematic system management and to minimize resource and operating cost with repetitive tasks.

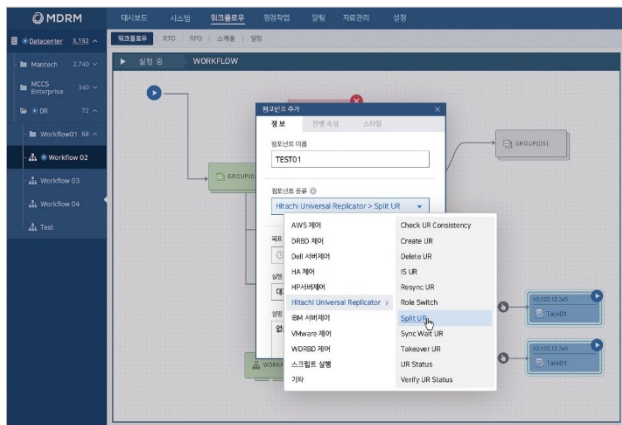


On-site Applications



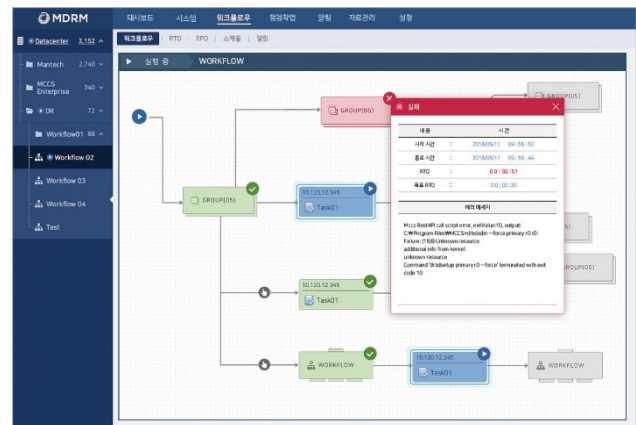
Main Features

Workflow Creation



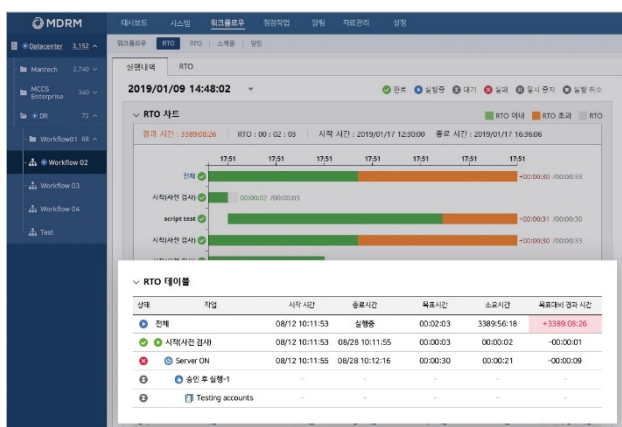
- Create a standard workflow template with the provided components or with client's custom scripts.
- Run the workflow one at a time, or multiple at once.

Workflow Execution



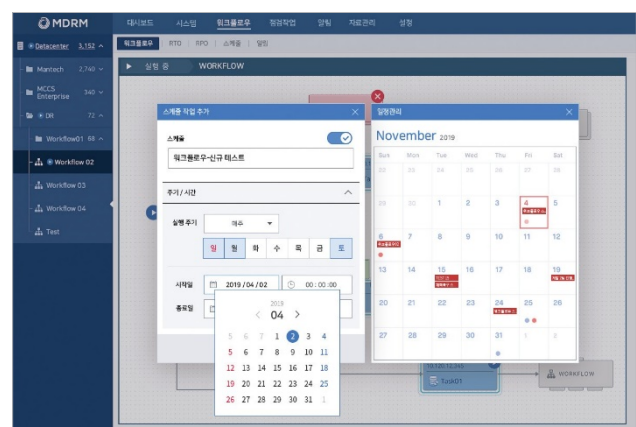
- Catch and response any failure with the visualized workflow execution steps
- Categorize or prioritize the workflow as a disaster recovery plan, simulation training plan, or etc.
- Run any workflow steps as the need.

SLA Compliance



- Monitor RTO/RPO and the compliance level of each task or application.
- Discover the resource that violates SLA with the intuitive graphs.

Initial Program Load (IPL)



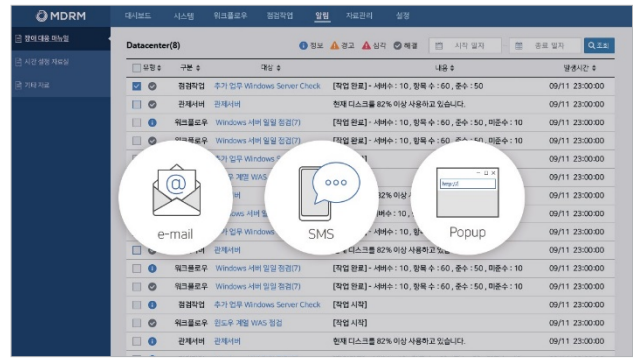
- Manage scheduled workflow tasks with the GUI.
- Create a schedule to run daily, weekly, or monthly.

Intuitive System Monitoring



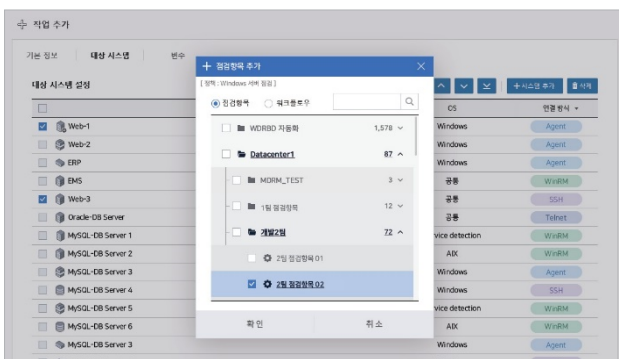
- Integrated management or resource monitoring on the server, storage, or network for both production and the stand by system.
- Easily monitor and set the critical value of the system with a help of various monitoring plugins.

Multiple Alert System



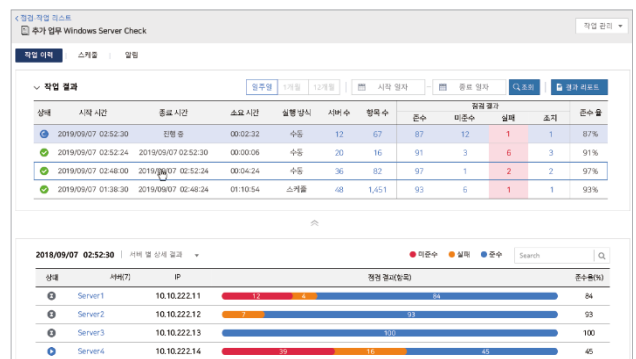
- Receive the system failure alert or the workflow/routine check result.
- Receive the alert via Email, SMS, or the popup message window.

Manage Daily Routine Check Schedule



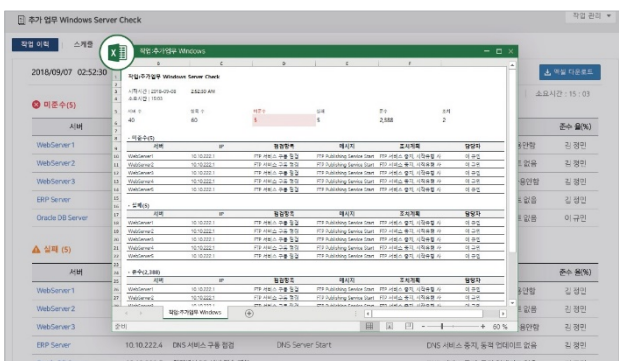
- Select a system or a module to create a schedule.
- Run the task by schedule or manually.

Daily Routine Check Report



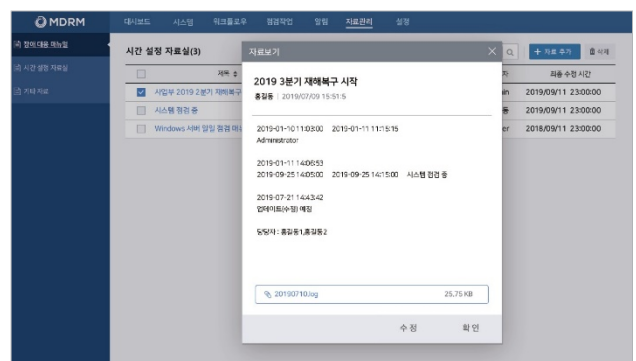
- Receive a details task result report by servers and categories.

Report



- Save and download the workflow procedures or the task results as a spreadsheet file.

Document Management



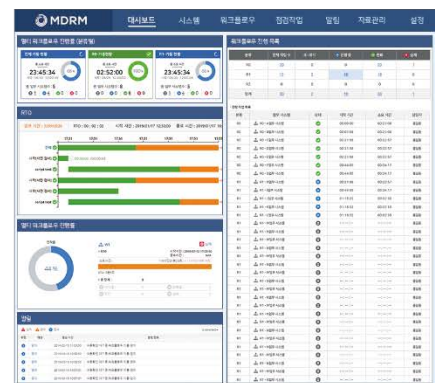
- Manage various workflow procedures, business manuals or other documents to be referenced day-to-day operations or when an excepted event occurs.

Dashboard Customization



- Users can build their own dashboard with 30 or more provided widgets.

Individual & Situation Specific Dashboard



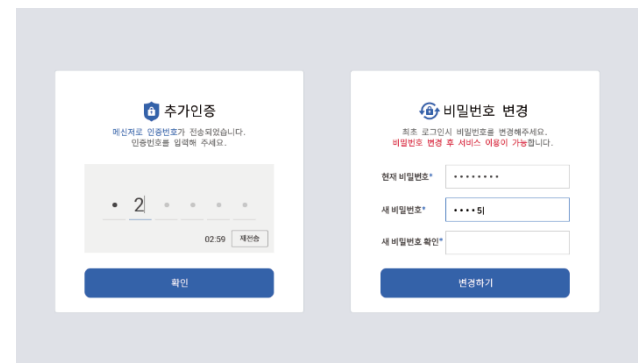
- Provides multiple dashboards based on individual accounts and circumstances (Resource Monitoring, Simulation Training, IPL and Daily Routine Checks)

Mobile UI Support



- Mobile platform allows user to monitor and control the workflow or scheduled tasks.

Advanced Security



- Two-factor authentication via Email or SMS
- Induce user to reset the password upon first login
- Periodic (90 days) Password Reset Alert

It's amazing what automation makes possible.

Operation

- Task or Worksite Automation
- Daily Routine Check Automation
- Various Component Template Provided
- User Permission Management
- RTO / PRO Management
- User-oriented GUI & Mobile platform provided



Management

- Integrated multi-dashboard agreement
- User built dashboard with diverse selection
- Visualized Recovery Procedure
- System Status Monitoring
- Reports & Alerts System

Expected Outcome



50% or more RTO reduction

Secure stabilizing period by Automation



50% or more effective productivity

Broadcast or share the information with the integrated dashboard



Provides R&R based on the workflow

Risk Taking based on process level workflow



All In One Solution

Disaster Recovery & Administrative Control

Supported Environment

Operating System	Storage	Cloud / Virtualization	Database	Web Application	ETC
<ul style="list-style-type: none"> • Windows 2008 • Windows 2012 • RHEL • CentOS • Asianux • Oracle Linux • IBM PowerLinux • IBM AIX • HP-UX • Oracle Solaris • SUSE • Ubuntu 	<ul style="list-style-type: none"> • SAN • iSCSI • DAS • NAS • PCIe type NAND • EMC • Hitachi • IBM • HP • NetApp 	<ul style="list-style-type: none"> • VMware vSphere • MS Hyper-V • RHV • Citrix Hypervisor • Oracle VM • Amazon AWS 	<ul style="list-style-type: none"> • Oracle DB • Oracle RAC • Oracle ADG • MS-SQL • DB2 • SAP NetWeaver • SAP Hana • MySQL • MariaDB • PostgreSQL • Tibero • Cubrid • MongoDB • Sybase • Informix 	<ul style="list-style-type: none"> • Weblogic • Websphere • Jeus • JBoss EAP • JBoss EWS • Tomcat • Apache • IIS • Nginx • WebtoB 	<ul style="list-style-type: none"> • NFS • CIFS • Sendmail • Samba • Shareplex • OGG • DataGuard • User application